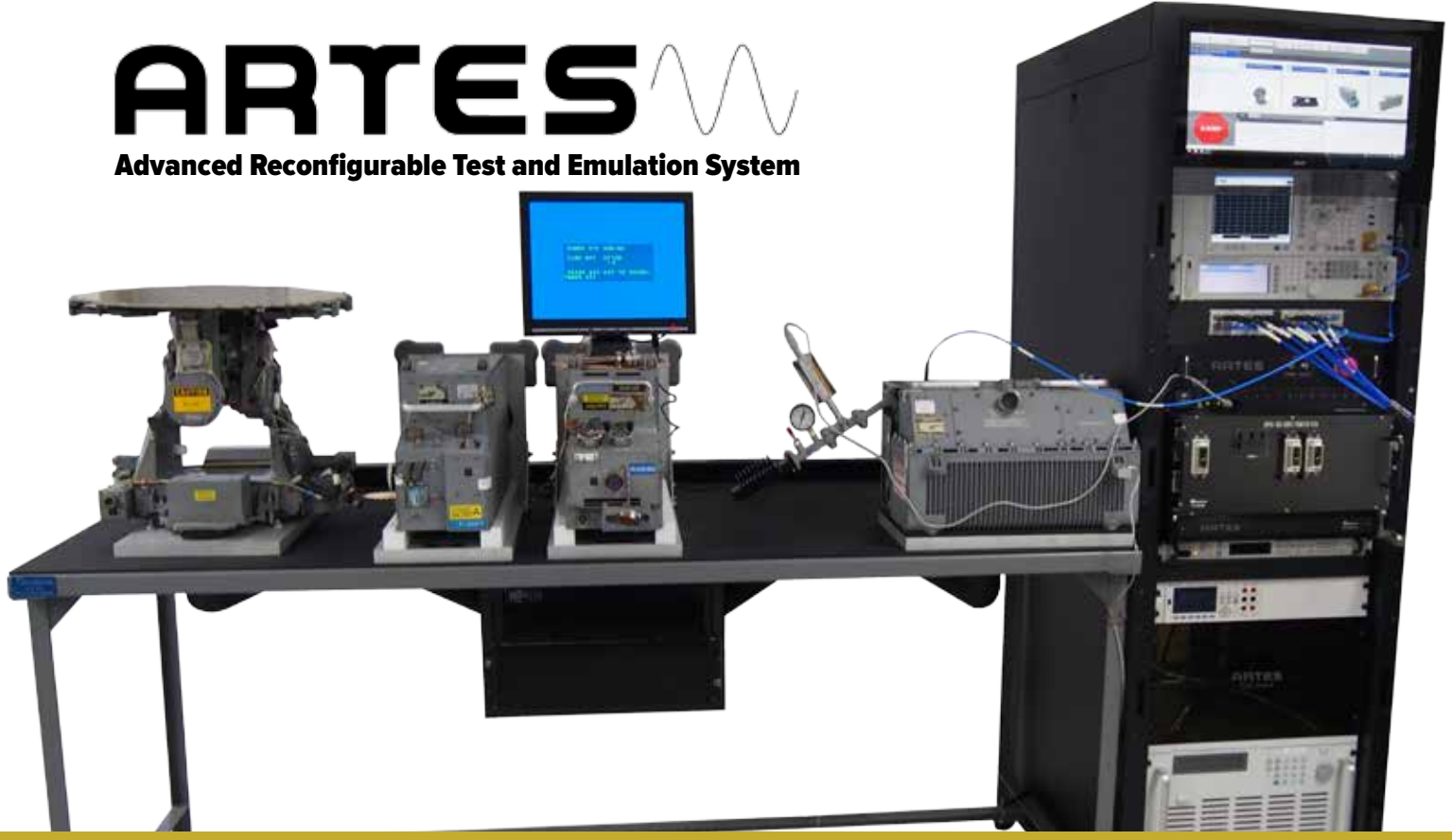


All your **TESTING** *in one small* **ATE**
change the **CABLES** *to change your* **TEST**

ARTES

Advanced Reconfigurable Test and Emulation System



TESTING CAPABILITIES FOR THESE SYSTEMS AND MORE



SEE VIDEOS OF THE ARTES IN ACTION AT ARTES.DUOTECHSERVICES.COM

ARTES

Advanced Reconfigurable Test and Emulation System



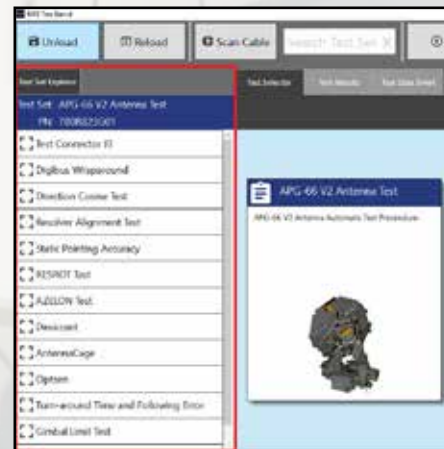
Easily identify and operate test programs

Test No.	Test Sequence ID	Pass/Fail	Minimum	Measured	Maximum	Result
A.2.1	Diagonal -170C Power (Pa 0)		0.00 TDC		0.00 TDC	NOT RUN
A.2.2	Diagonal -170C Power (Pa 90)		0.00 TDC		0.00 TDC	NOT RUN
A.2.3	Diagonal -170C Power (Pa 180)		0.00 TDC		0.00 TDC	NOT RUN
A.2.4	Diagonal -170C Power (Pa 270)		0.00 TDC		0.00 TDC	NOT RUN
A.2.5	Diagonal -170C Power (Pa 360)		0.00 TDC		0.00 TDC	NOT RUN
A.2.6	Diagonal -170C Power (Pa 450)		0.00 TDC		0.00 TDC	NOT RUN
A.2.7	Diagonal -170C Power (Pa 540)		0.00 TDC		0.00 TDC	NOT RUN
A.2.8	Diagonal -170C Power (Pa 630)		0.00 TDC		0.00 TDC	NOT RUN
A.2.9	Diagonal -170C Power (Pa 720)		0.00 TDC		0.00 TDC	NOT RUN
A.2.10	Diagonal -170C Power (Pa 810)		0.00 TDC		0.00 TDC	NOT RUN
A.2.11	Diagonal -170C Power (Pa 900)		0.00 TDC		0.00 TDC	NOT RUN

Report generation and test sequences that follow the OEM technical data

ID	Detail	Minimum	Measured	Maximum	Result
A.2.1.1.1	Amplitude Accuracy Receiver Error	0.000 TDC	0.000 TDC	NOT RUN	
A.2.1.1.2	Amplitude Accuracy Receiver Error	0.000 TDC	0.000 TDC	NOT RUN	
A.2.1.1.3	Amplitude Accuracy Receiver Error	0.000 TDC	0.000 TDC	NOT RUN	
A.2.1.1.4	Amplitude Accuracy Receiver Error	0.000 TDC	0.000 TDC	NOT RUN	
A.2.1.1.5	Amplitude Accuracy Receiver Error	0.000 TDC	0.000 TDC	NOT RUN	
A.2.1.1.6	Amplitude Accuracy Receiver Error	0.000 TDC	0.000 TDC	NOT RUN	
A.2.1.1.7	Amplitude Accuracy Receiver Error	0.000 TDC	0.000 TDC	NOT RUN	
A.2.1.1.8	Amplitude Accuracy Receiver Error	0.000 TDC	0.000 TDC	NOT RUN	
A.2.1.1.9	Amplitude Accuracy Receiver Error	0.000 TDC	0.000 TDC	NOT RUN	
A.2.1.1.10	Amplitude Accuracy Receiver Error	0.000 TDC	0.000 TDC	NOT RUN	
A.2.1.1.11	Amplitude Accuracy Receiver Error	0.000 TDC	0.000 TDC	NOT RUN	
A.2.1.1.12	Amplitude Accuracy Receiver Error	0.000 TDC	0.000 TDC	NOT RUN	
A.2.1.1.13	Amplitude Accuracy Receiver Error	0.000 TDC	0.000 TDC	NOT RUN	
A.2.1.1.14	Amplitude Accuracy Receiver Error	0.000 TDC	0.000 TDC	NOT RUN	
A.2.1.1.15	Amplitude Accuracy Receiver Error	0.000 TDC	0.000 TDC	NOT RUN	
A.2.1.1.16	Amplitude Accuracy Receiver Error	0.000 TDC	0.000 TDC	NOT RUN	
A.2.1.1.17	Amplitude Accuracy Receiver Error	0.000 TDC	0.000 TDC	NOT RUN	
A.2.1.1.18	Amplitude Accuracy Receiver Error	0.000 TDC	0.000 TDC	NOT RUN	
A.2.1.1.19	Amplitude Accuracy Receiver Error	0.000 TDC	0.000 TDC	NOT RUN	
A.2.1.1.20	Amplitude Accuracy Receiver Error	0.000 TDC	0.000 TDC	NOT RUN	
A.2.1.1.21	Amplitude Accuracy Receiver Error	0.000 TDC	0.000 TDC	NOT RUN	
A.2.1.1.22	Amplitude Accuracy Receiver Error	0.000 TDC	0.000 TDC	NOT RUN	
A.2.1.1.23	Amplitude Accuracy Receiver Error	0.000 TDC	0.000 TDC	NOT RUN	
A.2.1.1.24	Amplitude Accuracy Receiver Error	0.000 TDC	0.000 TDC	NOT RUN	
A.2.1.1.25	Amplitude Accuracy Receiver Error	0.000 TDC	0.000 TDC	NOT RUN	
A.2.1.1.26	Amplitude Accuracy Receiver Error	0.000 TDC	0.000 TDC	NOT RUN	
A.2.1.1.27	Amplitude Accuracy Receiver Error	0.000 TDC	0.000 TDC	NOT RUN	
A.2.1.1.28	Amplitude Accuracy Receiver Error	0.000 TDC	0.000 TDC	NOT RUN	
A.2.1.1.29	Amplitude Accuracy Receiver Error	0.000 TDC	0.000 TDC	NOT RUN	
A.2.1.1.30	Amplitude Accuracy Receiver Error	0.000 TDC	0.000 TDC	NOT RUN	
A.2.1.1.31	Amplitude Accuracy Receiver Error	0.000 TDC	0.000 TDC	NOT RUN	
A.2.1.1.32	Amplitude Accuracy Receiver Error	0.000 TDC	0.000 TDC	NOT RUN	
A.2.1.1.33	Amplitude Accuracy Receiver Error	0.000 TDC	0.000 TDC	NOT RUN	
A.2.1.1.34	Amplitude Accuracy Receiver Error	0.000 TDC	0.000 TDC	NOT RUN	
A.2.1.1.35	Amplitude Accuracy Receiver Error	0.000 TDC	0.000 TDC	NOT RUN	
A.2.1.1.36	Amplitude Accuracy Receiver Error	0.000 TDC	0.000 TDC	NOT RUN	
A.2.1.1.37	Amplitude Accuracy Receiver Error	0.000 TDC	0.000 TDC	NOT RUN	
A.2.1.1.38	Amplitude Accuracy Receiver Error	0.000 TDC	0.000 TDC	NOT RUN	
A.2.1.1.39	Amplitude Accuracy Receiver Error	0.000 TDC	0.000 TDC	NOT RUN	
A.2.1.1.40	Amplitude Accuracy Receiver Error	0.000 TDC	0.000 TDC	NOT RUN	
A.2.1.1.41	Amplitude Accuracy Receiver Error	0.000 TDC	0.000 TDC	NOT RUN	
A.2.1.1.42	Amplitude Accuracy Receiver Error	0.000 TDC	0.000 TDC	NOT RUN	
A.2.1.1.43	Amplitude Accuracy Receiver Error	0.000 TDC	0.000 TDC	NOT RUN	
A.2.1.1.44	Amplitude Accuracy Receiver Error	0.000 TDC	0.000 TDC	NOT RUN	
A.2.1.1.45	Amplitude Accuracy Receiver Error	0.000 TDC	0.000 TDC	NOT RUN	
A.2.1.1.46	Amplitude Accuracy Receiver Error	0.000 TDC	0.000 TDC	NOT RUN	
A.2.1.1.47	Amplitude Accuracy Receiver Error	0.000 TDC	0.000 TDC	NOT RUN	
A.2.1.1.48	Amplitude Accuracy Receiver Error	0.000 TDC	0.000 TDC	NOT RUN	
A.2.1.1.49	Amplitude Accuracy Receiver Error	0.000 TDC	0.000 TDC	NOT RUN	
A.2.1.1.50	Amplitude Accuracy Receiver Error	0.000 TDC	0.000 TDC	NOT RUN	

Detailed data analysis while running tests and troubleshooting equipment



Provide insights into theory of operation and test description

- ★ Reconfigurable I/O for digital, analog, switch Matrix and RF
- ★ Less than 40% current test stand costs
- ★ Mobile to flight line or back shop
- ★ Integration with COTS test equipment
- ★ Automatically detects system connection and loads applicable test program

- ★ Extremely rapid new test development, integration, and deployment
- ★ New test programs created and validated at DSI
- ★ Tests radar, communications, processors, antennas, flight controls, and much more
- ★ Integrates USAF and OEM test parameters



Contact Duotech Services at (828) 369-5411
About@DuotechServices.com | AS9100C + ISO 9001

WATCH VIDEOS OF THE ARTES IN ACTION AT
ARTES.DUOTECHSERVICES.COM